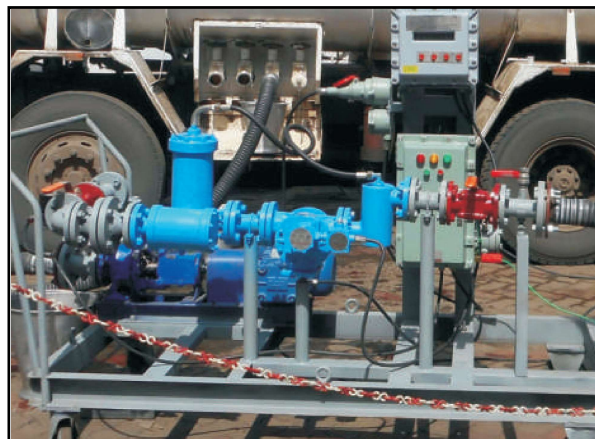




POSITIVE DISPLACEMENT METERS AND ACCESSORIES





Applications

Truck Mounted Metering

- Aviation Fuel
- Refined Fuels
- Lube Oils & Additives
- LPG

Terminal/Depot Metering

- Refined Petroleum Products
- Solvents/Chemicals
- Marine Fuel Oil

Industrial Process Metering

- Industrial Liquids
- Barrel Filling
- Batching/Blending
- Dispenser Metering

Others

- Ship Bunkering and Barge Loading
- Rail Wagon Loading
- Railway Consumer Depot (RCD)

About Us

Vermont Technologies is engaged in manufacture and supply of reliable, high accuracy, Positive Displacement (P.D.) flow metering systems. All meters are designed to provide highest performance in flow measurement, meeting international custody transfer measurement standards. These meters are designed for use with a variety of liquids. Each meter is fully tested and calibrated at our manufacturing facility before despatch.

Design Features

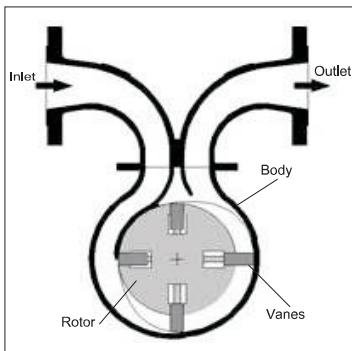
- Unique design for Sustained accuracy
- Separate manifold prevents pipeline stresses from being transmitted to the measuring chamber
- Modular construction ensures interchangeable parts, lower inventory of spares and ease of service
- Low pressure drop
- Mechanical or electronic readout



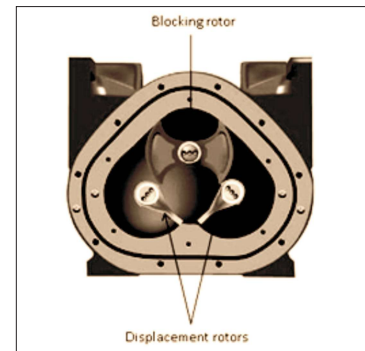
Your Liquid Assets Manager

Vermont TL & Taurus Series P.D. Meters

Construction



Vermont has Two designs of P.D. Meters one unchallenged Rotary Vane Design & Second Tri- Rotor efficient design.



Sustained Accuracy

Rotary vane design works on the principle of “capillary seal”, which ensures unmatched accuracy even for liquid with less viscosity. Any variation in viscosity does not affect accuracy. A rotating or reciprocating mechanical device is located inside the chamber to generate fixed volume discrete parcels from the flowing liquid.

Efficient Design

Proven design of Tri-rotor ensures minimal wear and longer service life. It consists of a housing and three rotors. The rotors are supported by bearings plates. The calibrator captures the rotor rotation in a calibrated manner and transmits it to counter.

Meters

Vermont meters are used for wide range of applications. From Truck mounted applications to Refinery Terminals and refined Petroleum products to Industrial chemicals.

Truck Meters

Vermont C35 model or Taurus T-550 meter which are available in 2" size is widely used as Truck meter. It provides proven performance and have Weights & Measures Model approval.



TISI Batch Controller on LPG Truck

Process Batching Meters (C35 Model)

Vermont Meters are also widely used for industrial process batching Applications. This includes barrel filling, blending, batching of Various industrial liquids. Typical process Batching meter consists of P. D. flow meter with preset Register and Mechanical shut of valve. P. D. Meters can also be offered in Electronic configuration, with pulse output and batch controllers Configured with Digital Control Valve.



C35 Preset Meter with Mechanical E-type Counter



Preset Metering Package



Meter on Aircraft Refueller

Model	Size		Flow Range		Working Pressure	Accuracy	Materials of Construction			
	mm	inch	LPM	GPM			Housing	Rotor	Bearings	Seals
C35	50	2"	35-450	9-120	150 PSI (10.4 kg/cm ²)	±0.1%	Cast Steel S.S.	Al. Alloy S.S.	S.S.	Nitrile Viton
T-550	50	2"	30-550	8-125	150 PSI (10.4 kg/cm ²)	±0.1%	Alu., S.S.	Al. Alloy S.S.	Carbon/ P.B	Nitrile Viton

* For certain liquids and flow conditions, flow rate can be uprated by 30%

Loading Terminal Meters

The larger sizes (3" and above) TL series meters are ideal for load rack, rail wagon, barges applications and more. These meters are available in Single Case as well as Double Case construction, to suit wide range of applications and flow capacities. They provide unmatched accuracy and trouble free operation over long period of use.



3" Mechanical Preset Package

Meters can be fitted with mechanical Veeder Root products or with Electronic Batch Controllers and Digital Control Valve.



3" Double Case Meter



Electronic Preset Batch Controller

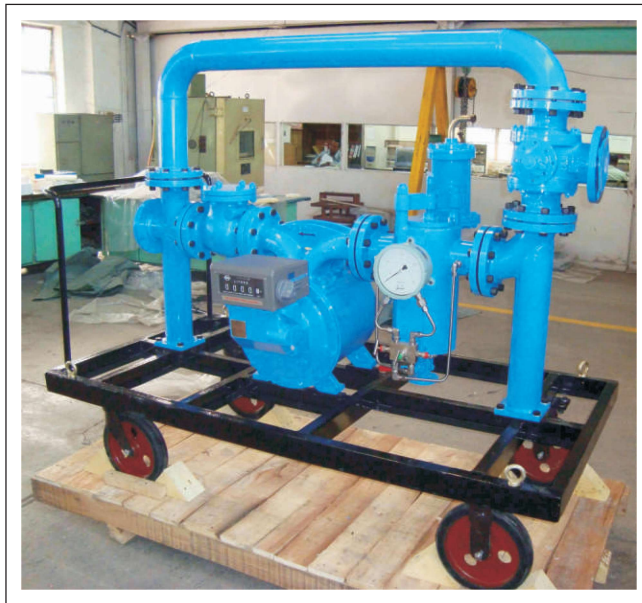


8" Meter with Pulse Output

SIZE	MODEL	CASING	FLOW RANGE (UPTO LPM)	MAX. WORKING PRESSURE (PSI)	MATERIALS OF CONSTRUCTION			
					Housing	Rotor	Bearings	Seals
3"	TL-03/04	Single	1500	150 / 300	Cast Steel S.S.	Al. Alloy S.S.	S.S.	Nitrile Viton
3"	TL-05/06	Single	2100	150 / 300				
4"	TL-07/08	Single	2300	150 / 300				
4"	TL-09/10	Single	3000	150 / 300				
6"	TL-11/12	Single	3000	150 / 300				
6"	TL-13/14	Single	5000	150 / 300				
8"	TL-15/16	Single	5500	150 / 300				
3"	TLD-01/02	Double	1500	150 / 300	Cast Steel S.S.	Al. Alloy S.S.	S.S.	Nitrile Viton
3"	TLD-03/04	Double	2000	150 / 300				
4"	TLD-05/06	Double	2200	150 / 300				
4"	TLD-07/08	Double	3000	150 / 300				
6"	TLD-09/10	Double	3000	150 / 300				

Metering Skids

Vermont can offer custom built metering skids. From design, engineering, manufacture, fabrication, to testing and calibration. The skid systems are designed to suit customer requirements, which may accommodate all necessary equipments including strainers, air eliminators, pumps, valves and flow computers etc. The skid is cabled, assembled and tested in the factory and then delivered to the destination.



Metering skids can be designed with

- P. D. flow meter
- Turbine meter
- Mass (Coriolis) meter

Metering standards available

- ANSI
- API
- OIML
- ISO

Proving Skids and Systems

The tank Prover systems are designed and manufactured in accordance with Legal Metrology regulations. These provers can be Static or Trolley mounted, available in different capacities.

Proving skids are also designed as per customer's specific requirements, which may include flow computer, prover tanks, pump & motor, set of valves, master meter and other equipments.



Meter Accessories

A. Counters

Veeder Root 7887 or Vermont V01 for volume indication, 5 digit large numerical Reset with 8 digit non-reset totalizer. Liters, Decaliters, Gallons indication.



Veeder Root 7889 or Vermont V02 Preset Counter select predetermined volume for precise batch control.



VeederRoot EMR3 Electronic display counter with remote indication, 4-20 mA output, data logging facility



Mechanical Economic E type Totalizers provide 5 digit resettable or 5 digit non-resettable totalization.



Veeder Root Ticket Printer 7888 provides an imprinted ticket for delivery transactions. Accumulative or Zero start options available.



Electronic Registration Ex proof as well as Panel mounted WP options to perform multiple functions and pulse output, Rs232/ 485 communication.



B. Pulse Transmitter

The electronic pulse signal output, to transmit to other electronic device for indication, flow control or data acquisition.



C. Strainer and Air Eliminator

For efficient operation of meter removes free air or vapour and protection from debris entering Into the flow meter.



Air Separator

Air separator efficiently separates and releases air or gas from liquid products before they are metered.



D. Mechanical Preset Valve

Preset valves provide an accurate and automatic control of a predetermined quantity of liquid to be delivered through the PD flow meter. A typical preset arrangement consist s of a Preset Valve mounted on the PD flow meter outlet and connected by a mechanical linkage to the preset register fitted below the PD flow meter counter



E. Digital Control Valve

Electrically actuated, hydraulically operated multifunction control valve. The valve also offers an In-built flow governing function. Also Two stage control valve.



Site Projects



Terminal Loading Site at UAE



Fuel unloading system at India



- Specifications are subject to change without notice.
- All dimensions are in mm unless otherwise specified.

Pub. No. 002
Issue 2 Rev 3 11-2017

Vermont Technologies Pvt. Ltd.

Corporate Office & Operations:

Plot No: PAP- A-8/6, "A" Block, Phase IV, MIDC Chakan, Opp Mahindra Vehicle, Dist:Pune- 410501

Tel. : +91 (2135) 690085 / 86

Email : ho@vermonttechnologies.co.in

Website : www.vermonttechnologies.co.in